

Luminaire Protection Device – Type 3

For electronic devices

These protective components are fitted with an LED indicator. Once the end of the component's life has been reached, the green LED goes out and the protective component has to be replaced.

SP230/10 K/HS/i

The green LED light will go out if the protective function fails

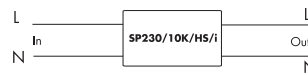
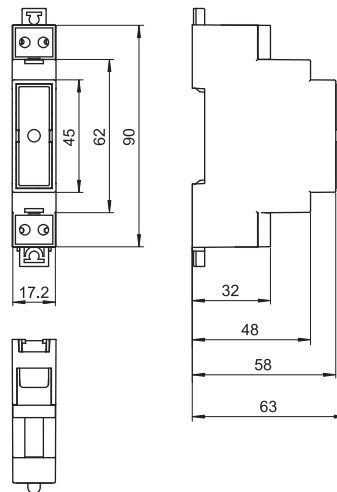
Dimensions (LxWxH): 90x17.2x63 mm

Weight: 45 g

Screw terminals: 0.5–2.5 mm²

Fixation on DIN installation rail

Ref. No.: 147240



Type	Ref. No.	Voltage 50/60 Hz V ±10 %	Max. load current (A)	Protection level at discharge current of 1000 A	Max. impulse voltage U _{OC} (V)	Discharge current* (8/20 μs)		Safety max. A	Max. permitted casing temperature °C	Fixation
						I _N (A)	I _{max} (A)			
SP230/10 K/HS/i	147240	220–240	16	≤ 1000 V	10000	5000	10000	16	–35 to 80	M8x10

* Discharge current: at 5000 A min. 10 strikes; at 10,000 A min. 1 strike

The values contained in this data sheet can change due to technical innovations. Any such changes will be made without separate notification.